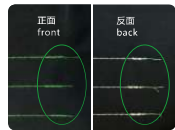


A8100-D4-W 系列/series 步进电机送料电子平缝机

STEPPING MOTOR FEEDING ELECTRONIC LOCKSTITCH MACHINE

- 全新外观
New appearance
- 实现针距实时可变
Realize real-time variable needle gauge
- 自编花样缝纫线迹
Design sewing stitch by itself
- 密集缝加固和倒缝加固自动切换
Auto switch between intensive stitch and reverse stitch auto change
- 倒缝静音
Reverse stitch mute
- 语音播报，一键还原
Voice function, a key reduction
- 通轴设计，力矩轻
Through shaft, lighter torque



密集缝加固和倒缝加固自动切换
Auto switch between intensive stitch and reverse stitch auto change



快捷方便，一键恢复出厂设置
Fast and convenient, one key to restore factory Settings



保养提醒，有效提升机器寿命
Maintenance reminder, effectively improve machine life



密封油箱：省油，工作环境更干净
Sealed fuel tank: saving fuel, Cleaner working environment

A8100-D4-W02	中厚料 Medium-weight materials	5000针/分	5mm	5.5mm最大 max	13mm最大 max	DBX1 #9-#18	10#白油 white oil	220V/550W

* 备注：具有自动剪线、自动穿线、自动倒回缝功能、自动抬压脚、防鸟巢(选配)、花样缝纫、密集缝纫

A8000-D4 系列/series 直驱高速四自动平缝机

DIRECT DRIVE HIGH SPEED FOUR-AUTO LOCKSTITCH MACHINE

- 全新外观，科技时尚
New ZOJE appearance, science and fashion
- 四自动功能配置，智能高效
4-Auto function configuration, intelligent and efficient
- 主轴与电机共轴设计，力矩轻、噪音低、更省电
Spindle and motor coaxial design, light torque, low noise, more energy saving
- 全新触屏，更智能，功能强大
New touch screen, more intelligent and powerful
- 人体工程手轮设计，散热佳
Ergonomics hand wheel design, good heat radiation
- 防鸟巢功能(选配)
Preventing bird nest device(Optional)
- 语音播报，一键还原
Voice function, a key reduction



高清触控大屏
Hd touch large screen

后盖板装饰
Back cover decoration

A8000-D4-G-TP	中厚料 Medium-weight materials	5000针/分	5mm	5.5mm最大 max	13mm最大 max	DBX1 #9-#18	10#白油 white oil	220V/550W

* 备注：具有自动剪线、自动穿线、自动倒回缝功能、自动抬压脚、底线检测和维护保养功能